

Station ID : CATK

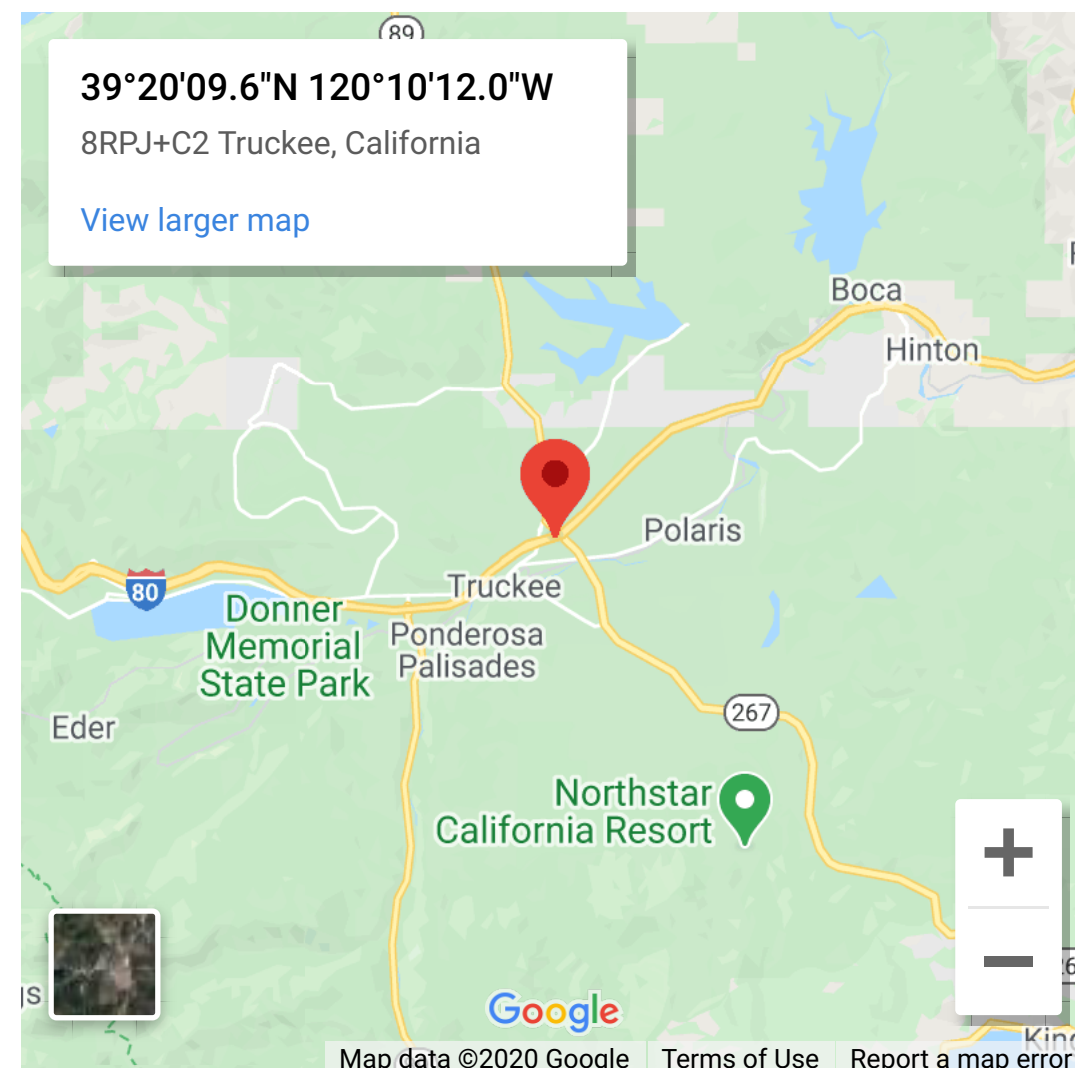
Station operator information from: [RINEX headers](#)

When using products from this system please cite [Blewitt et al., \(2018\)](#) for the processing plus also the citation for the original data.

Coordinates:

Latitude: 39.336 degrees
Longitude: -120.170 degrees
Height: 1796.429 meters

Time Series Data (ascii text)		
24 Hour Final Solutions		
IGS14	env	xyz
NA	env	
24 Hour Rapid Solutions		
IGS14	env	
NA	env	
5 Minute Final Solutions		
IGS14	kenv tar files for download	
5 Minute Rapid Solutions (last 60 days max)		
IGS14	kenv tar file download	
Quality Assurance (QA) Files		
IGS14	.qa.gz file download	
5 Minute Troposphere Solutions		
Tot./Wet Zenith Delay, etc.	tar file download	
Readme Files: tenv3 format , tenv format , xyz format , kenv format , trop format , QA file format		

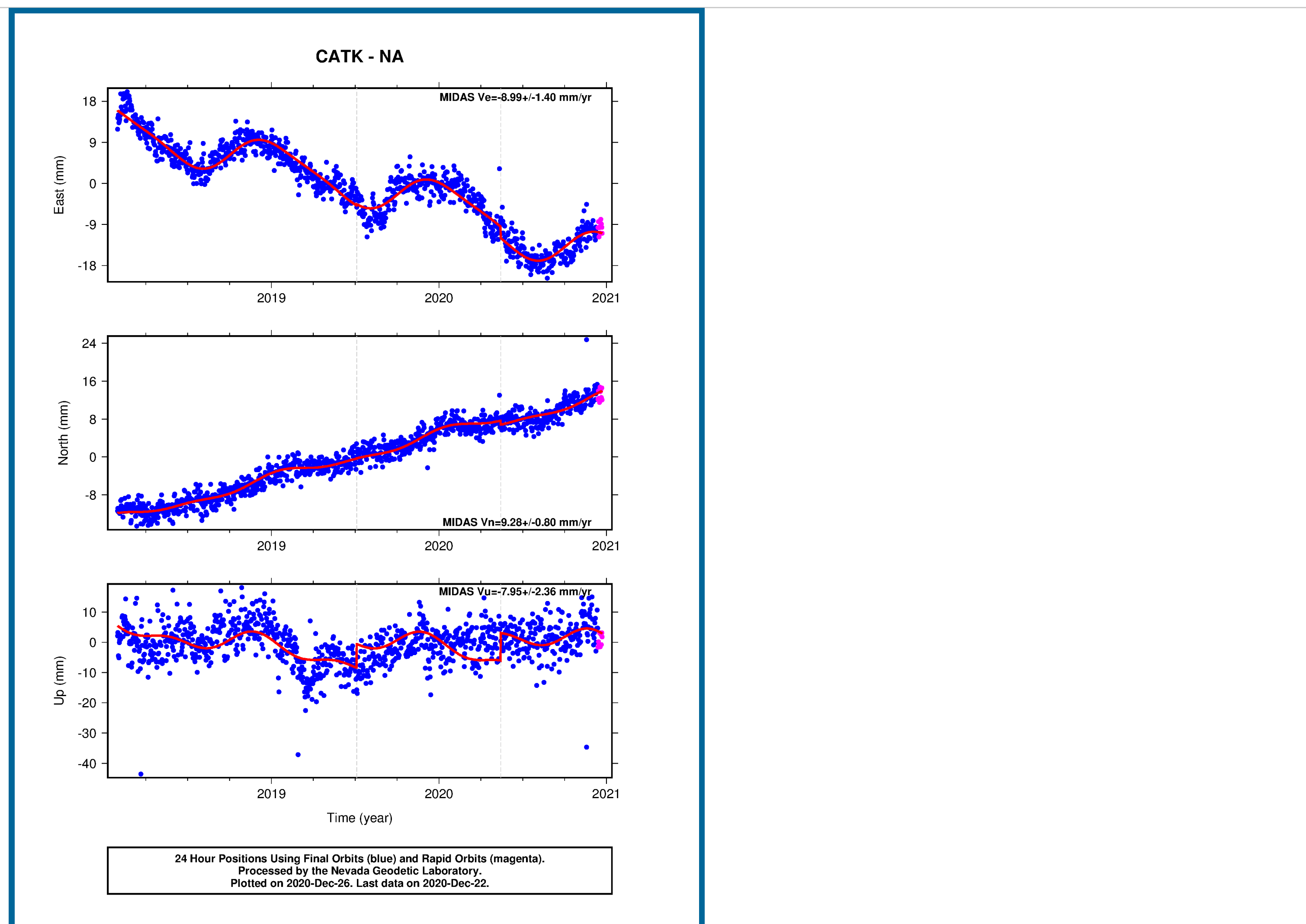


Nearest 4 Other Stations	Distance
BHIL	6.54 km
TRUC	6.65 km
P150	12.65 km
BOCA	13.63 km

Time Series Plots

Click on the buttons on the left below to choose from available reference frames, latencies, and sample rates. Original, Cleaned (outlier removed) and detrended (using MIDAS rate) plots are available. See [plot explanation page](#) for further explanations on plot contents.

IGS14 Original
IGS14 Cleaned
NA Plate Fixed
NA Plate Fixed Cleaned
MIDAS Detrended
Rapid 5 Minute



Steps Information for this station

Station ID	Date (YYMMDD)	Equipment Change Type/ or Event ID	Earthquake Magnitude	Distance (km)
CATK	19JUL06	ci38457511	7.1	456.7
CATK	20MAY15	nn00725272	6.5	239.4

Distance is from this station to earthquake epicenter in km. A potential step record appears when this distance is less than $10^{(M/2 - 0.8)}$ where M is earthquake magnitude.

Steps for all stations are given in the [master step file database](#).