

PLACET NATURA REGI TERRAM



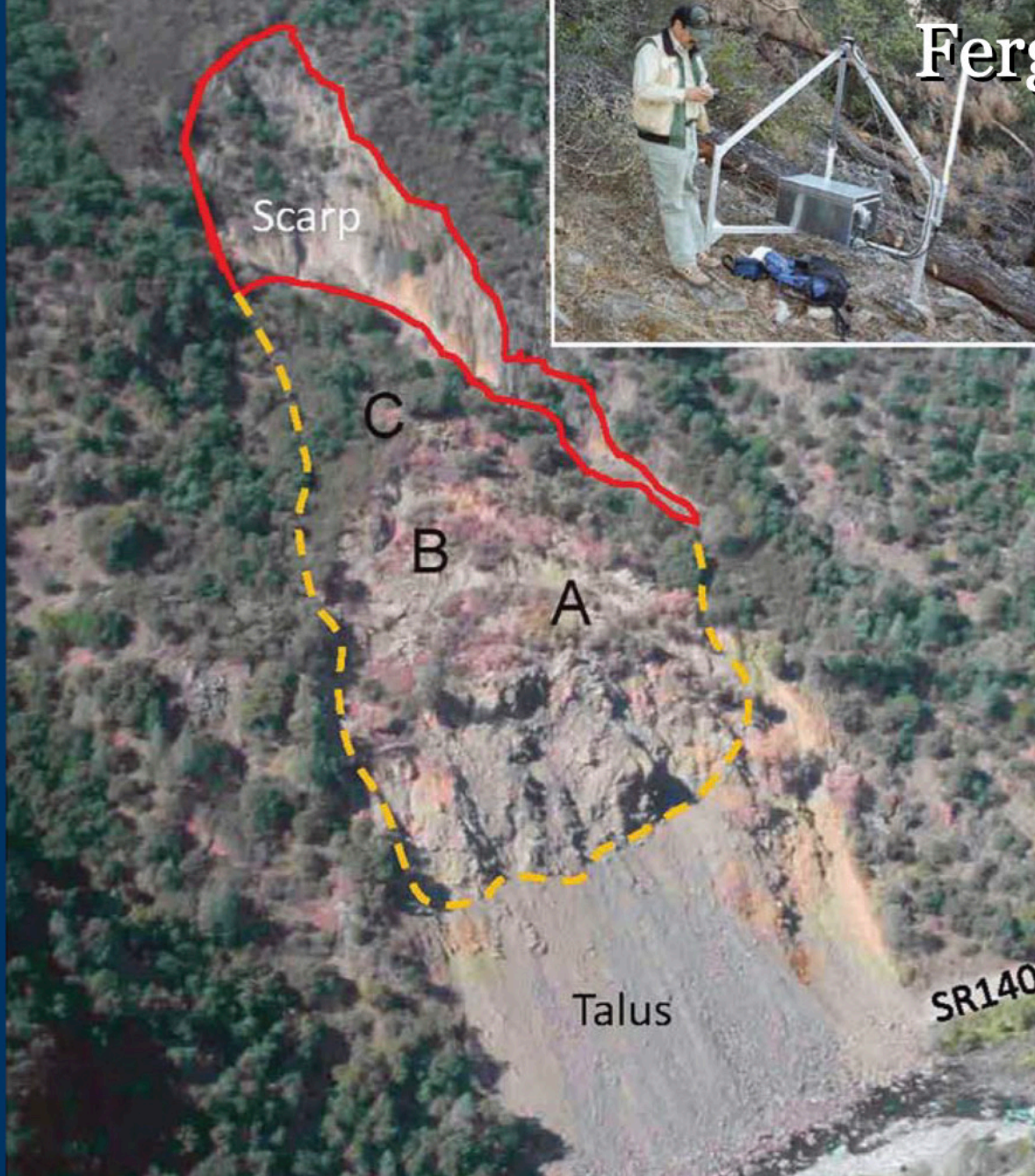
Professor Vince Cronin, Ph.D.
IAPG and Baylor University

Vince_Cronin@baylor.edu



INTERNATIONAL
ASSOCIATION for
PROMOTING
GEOETHICS

Ferguson rockslide, California, 2006











ROAD
CLOSED

ROAD
CLOSED

ROAD
CLOSED



Oso landslide, Washington, 2014



Photo by Jonathan Godt, USGS (2014)

“The only ethical principle which has made science possible is that the truth shall be told all the time.”

C.P. Snow, “The Search” (1932)





photo by V.S. Cronin



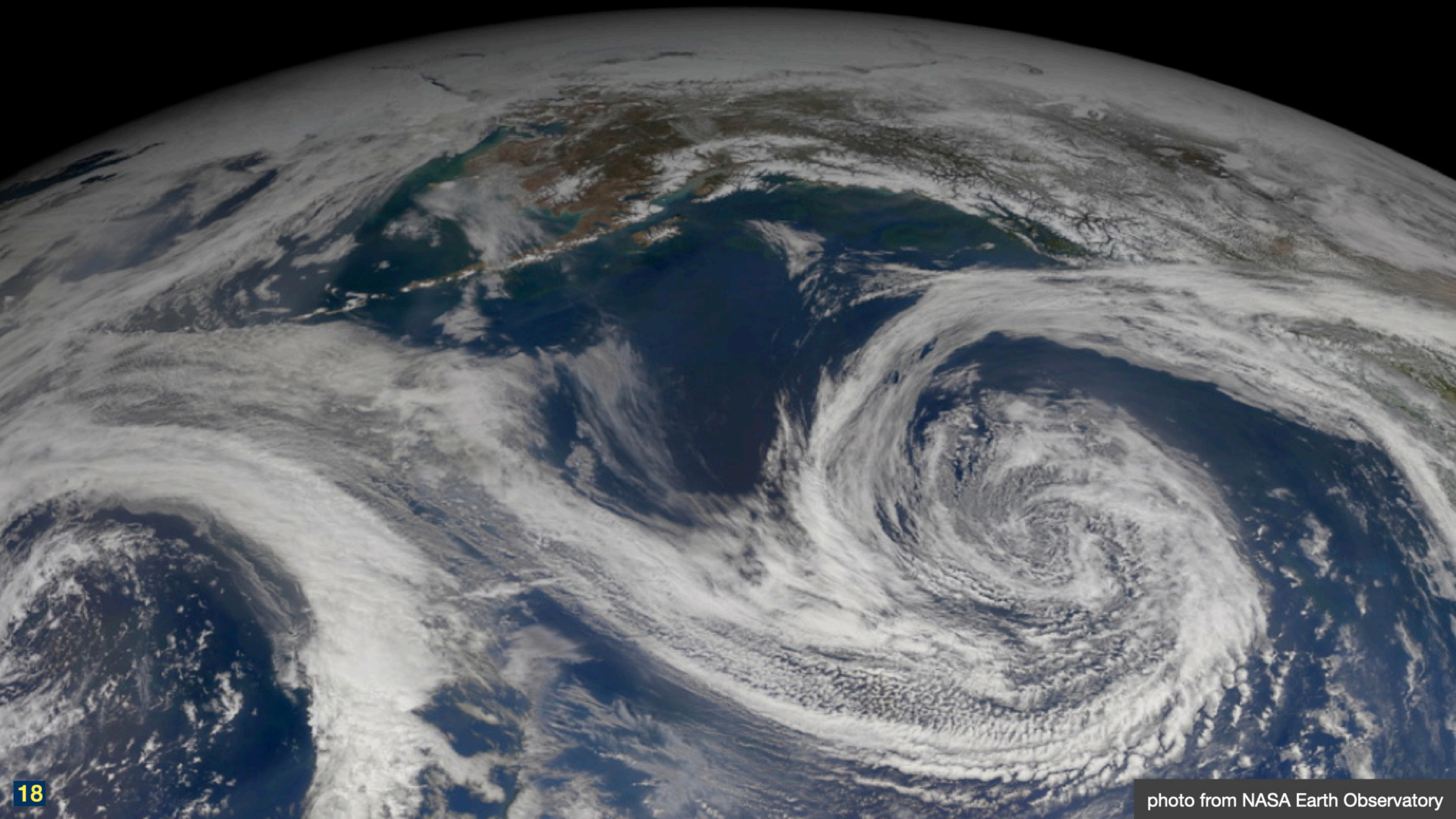
Imperative: To protect
public safety

Imperative: To abide by the ethical norms, standards, and best practices recognized by the science community

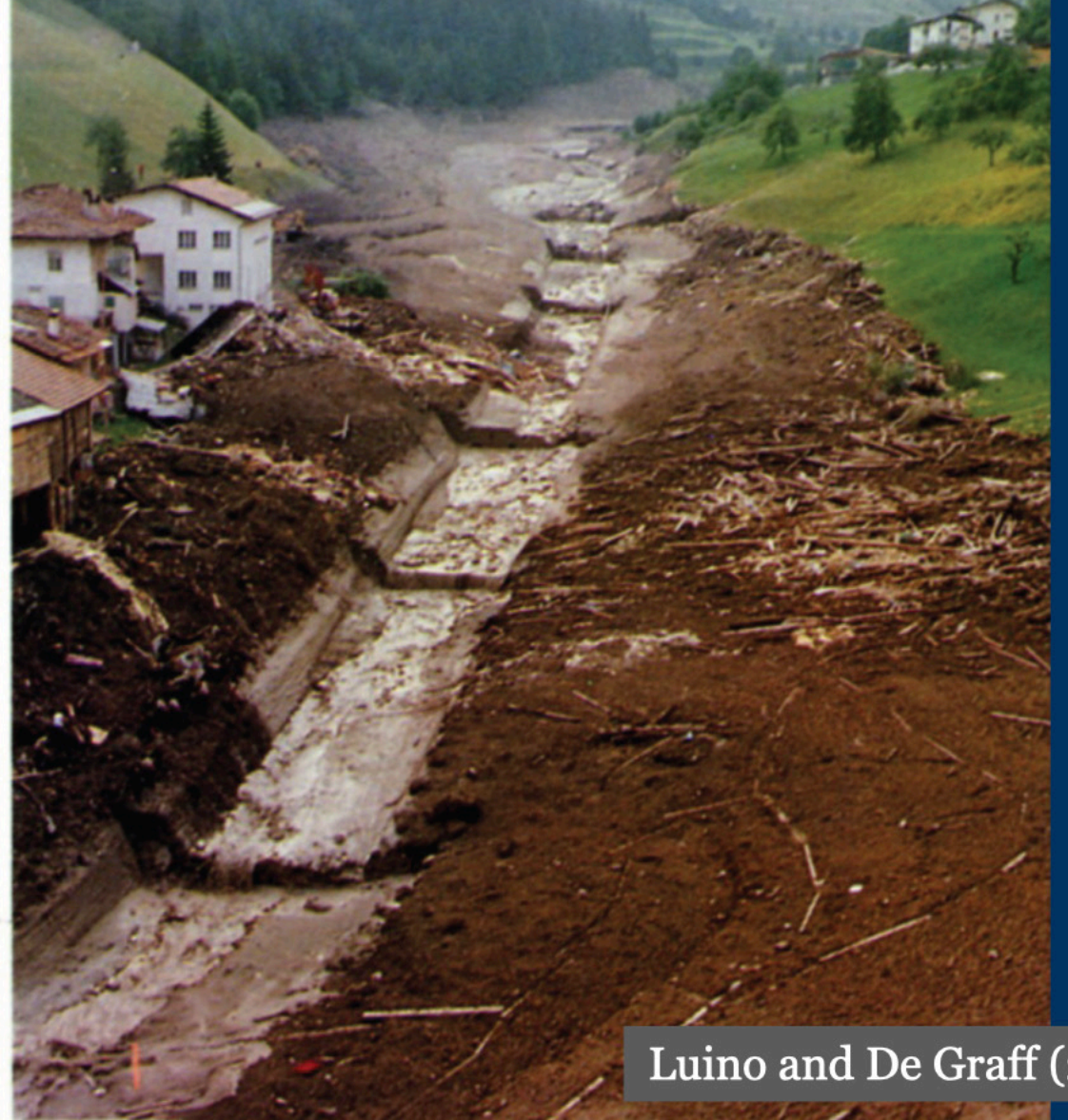
The ultimate client of any
engineering geologist
is society

“...hold paramount the safety, health, and welfare of the public and strive to comply with the principles of sustainable development.”

American Society of Civil Engineers (2017)



Before and after the Stava mudflow passed through Tesero, Italy, 1985



Luino and De Graff (2012)

If we do not act as responsible scientists in the public interest, the contributions of engineering geologists will not be sought or valued by society.

After Slosson et al. (1991)