

A human perception of
time scale

















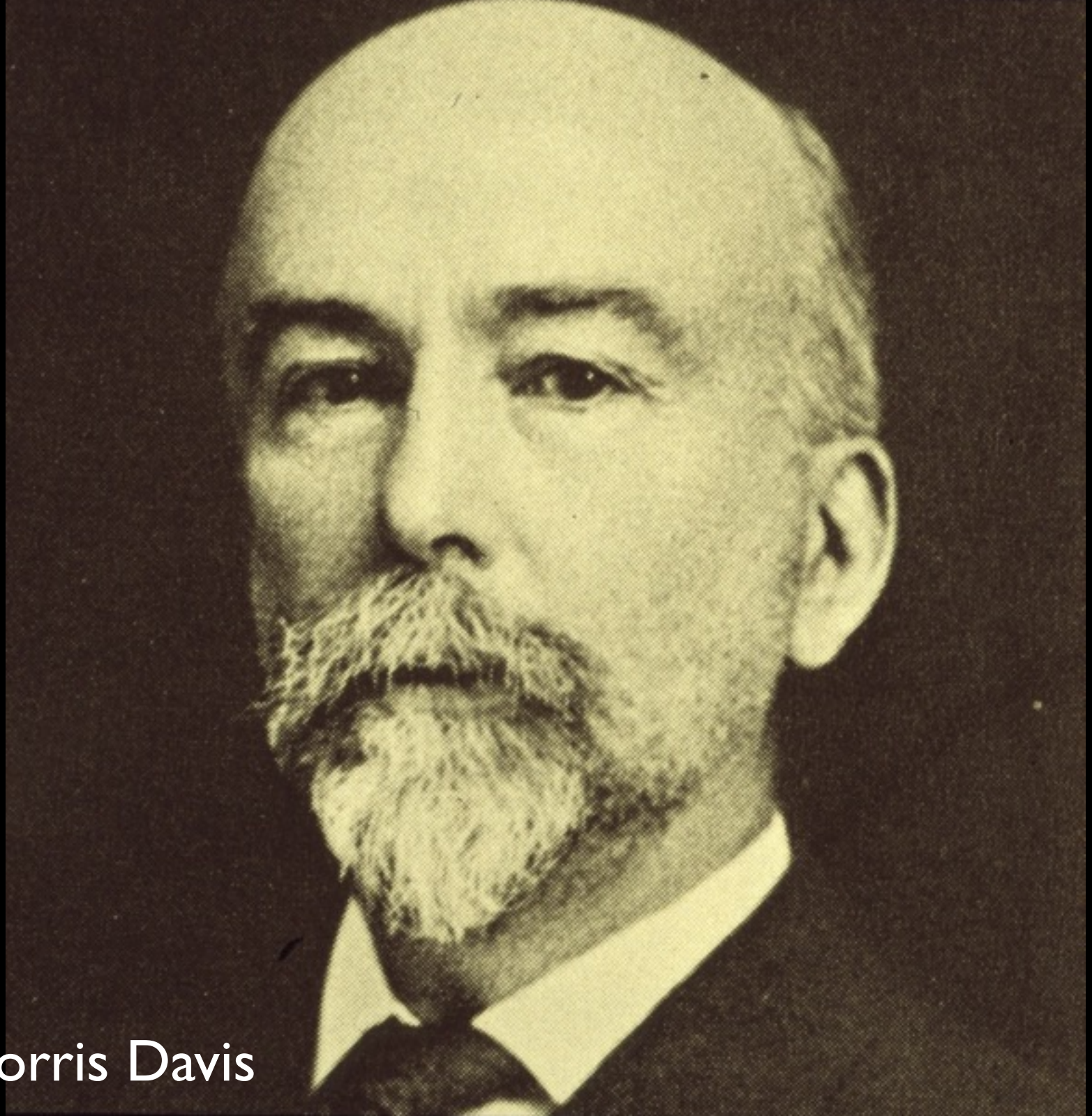




Mason Hill

A.O. Woodford





William Morris Davis



Joseph LeConte







Petroglyph, New
Mexico
~9,000 years old

Some Principles of Relative Dating

- Original horizontality
- Superposition
- Inclusion
- Cross-cutting relationships
- Faunal succession



Inclusion: the xenolith is older than the granite that includes (surrounds, incorporates) it



Inclusion and cross-cutting relationships



Siccar Point, Scotland